

# Starbucks

## WiFi secure connection guideline

PEOPLE.  
TECHNOLOGY.



 You can enjoy safer WiFi network via Starbucks WiFi secured connection.

Read the following instructions carefully and start to use safer, and reinforced WiFi security.

### 01 What is security SSID(KT\_starbucks\_Secure)?

When the security SSID is in use, WiFi terminal and the data that connects with WiFi AP are encrypted.  
The security SSID for Starbucks is "KT\_starbucks\_Secure".

### 02 How to use security SSID?

(This is based on Android device standard. For more information, please note the following connection guide with types of device).

#### STEP. 01



After turn on the Wi-Fi,  
select "**KT\_starbucks\_Secure**"

#### STEP. 02



Setting the verification  
EAP method : **PEAP**  
Phase 2 authentication : **MSCHPV2**

#### STEP. 03



ID/PASSWORD enter  
**ID : starbucks**  
**PASSWORD : starbucks**  
(All lower case)

#### STEP. 04



**Confirming the connection of**  
KT\_starbucks\_Secure.

#### STEP. 05



Agree Starbucks connected  
webpage terms, click  
**'Access Free Internet'** button.

※ After entering your ID/password, the WiFi is automatically connected afterwards.

※ In case you do not wish to be automatically connected, click "KT\_starbucks\_Secure" to open 'Connect this network/Forget this network/Edit this network' menu, Select 'Forget this network'

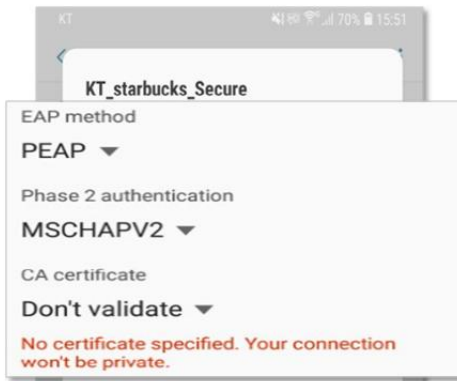
### 03 Instruction of connecting types of device



01 After turn on the Wi-Fi, select "KT\_starbucks\_Secure"



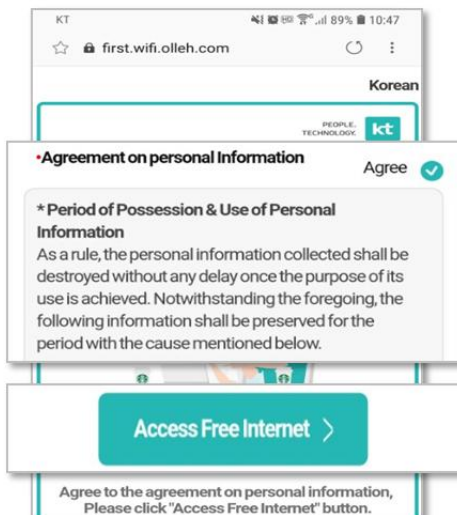
02 Setting the verification (EAP method : PEAP , Phase 2 authentication : MSCHAPV2 , CA certificate: Don't validate )



03 ID/PASSWORD Enter (ID : starbucks , PASSWORD : starbucks )

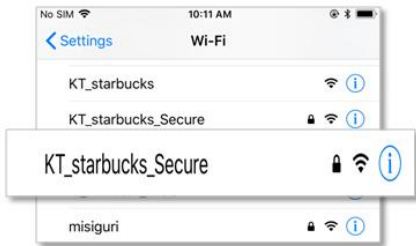


04 Simply agree the terms on Starbucks connecting webpage by clicking "Access Free Internet" button via browser. Internet is successfully connected!

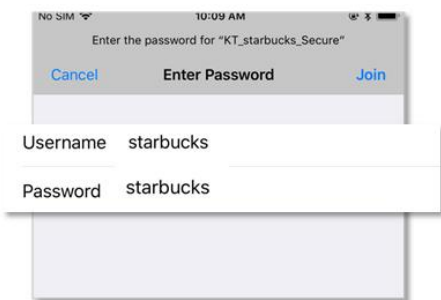




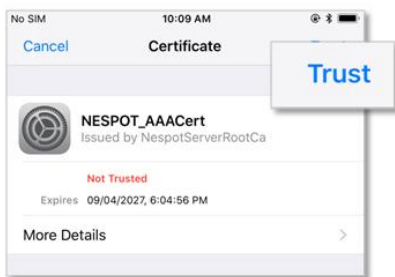
01 After turn on the Wi-Fi, select “KT\_starbucks\_Secure”



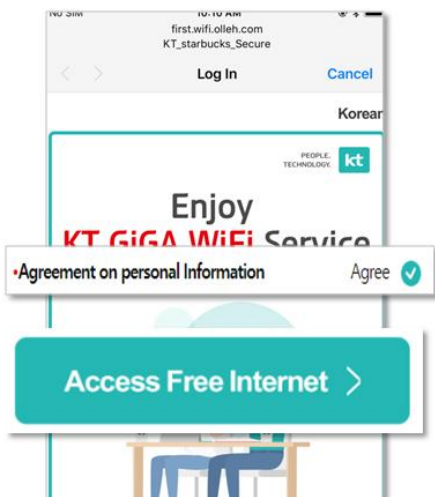
02 ID/PASSWORD Enter (ID : **starbucks** , PASSWORD : **starbucks** )



03 Click **Verify** button of authentication and connect



04 Simply agree the terms on Starbucks connecting webpage by clicking **Access Free Internet** button via browser. Internet is successfully connected!

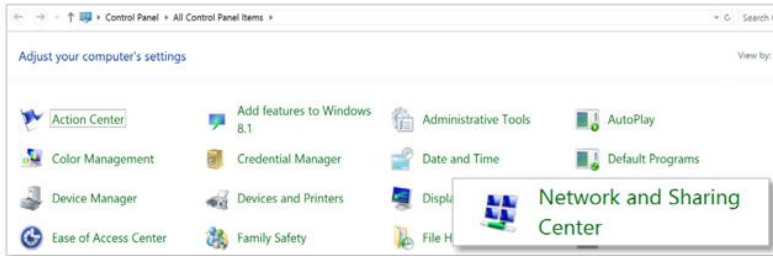




## Starbucks security SSID registration guidelines

### 01 Open 'Network and sharing center' in the control panel.

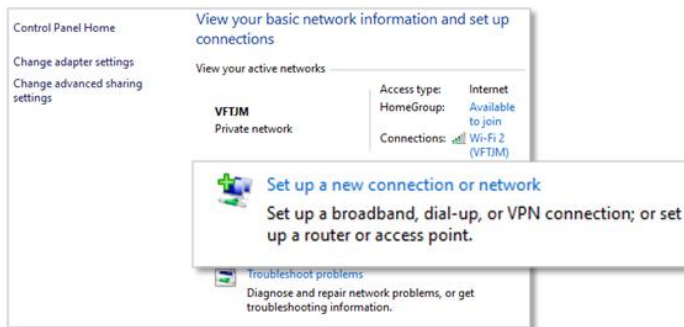
Select 'Network and sharing center' in the control panel.



### An example of Windows 10

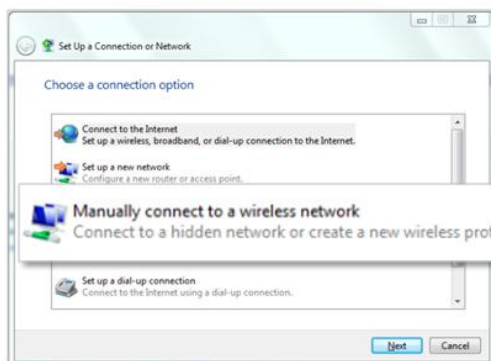
### 02 Executing 'Set up a New connection or network' from 'Network and sharing center'

Click 'Set up a new connection or network' from 'Network and sharing center' screen, and click 'Connection or wireless connection'.



### 03 Executing 'Manually connect to a wireless network' from 'Connection or wireless connection'

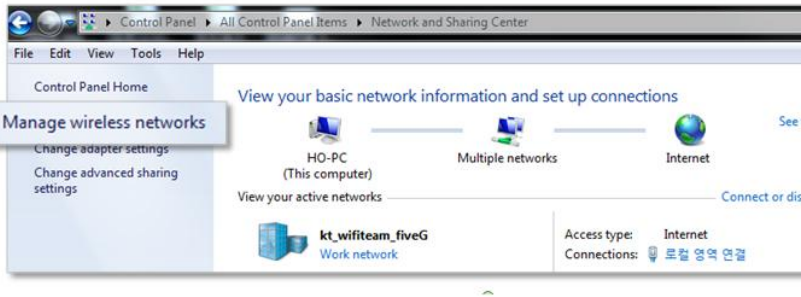
Select 'Manually connect to a wireless network' from 'Connection or wireless connection'.



## An example of Windows 7

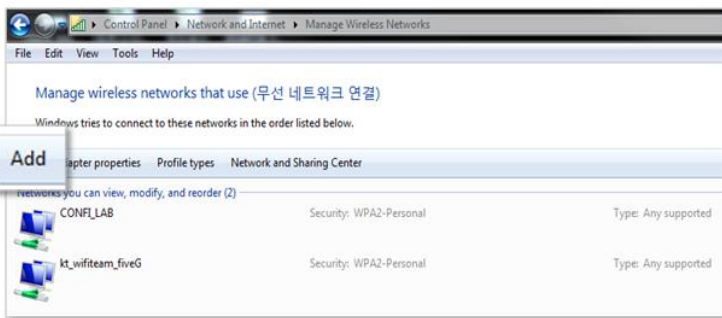
### 02 Executing 'Manage wireless networks' setting from 'Network and sharing center'

Click 'Manage wireless networks' to open the screen from 'Network and sharing center'



### 03 Executing 'add' function from 'Manage wireless networks'.

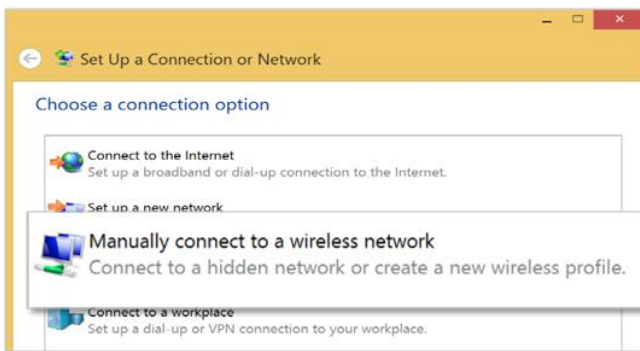
Click 'add' button from the screen.



## Common

### 03 Executing additional network

Click 'Manually create a network profile' button from selected open tap.



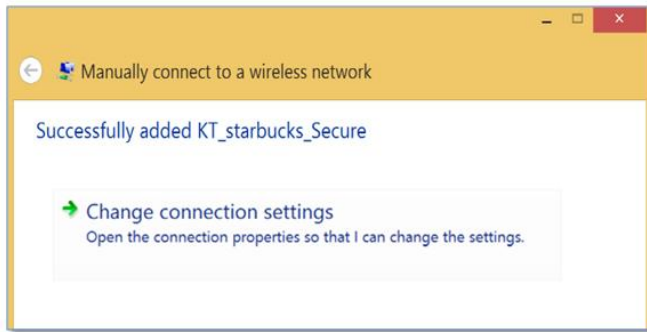
### 04 Entering the wireless network information.

Type [Network title : KT\_starbucks\_Secure, Security type : WPA2-Enterprise, Encryption type : AES], and click 'Next' button.



## 05 Executing 'Change connection setting'

Click 'Change connection setting' button in the next screen.

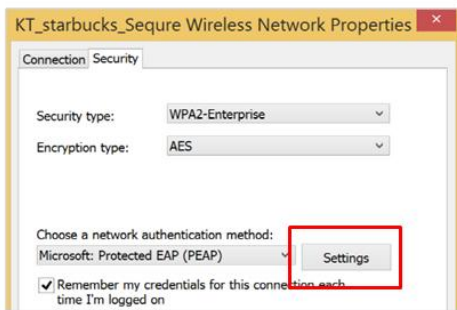


## 06 Executing wireless network setting connection.

Select 'Security' tab on the open tab, confirm the following securities:

[Security type: WPA2-Enterprise] [Encryption type: AES] [Choose a network authentication method: Microsoft: Protected EAP (PEAP)]

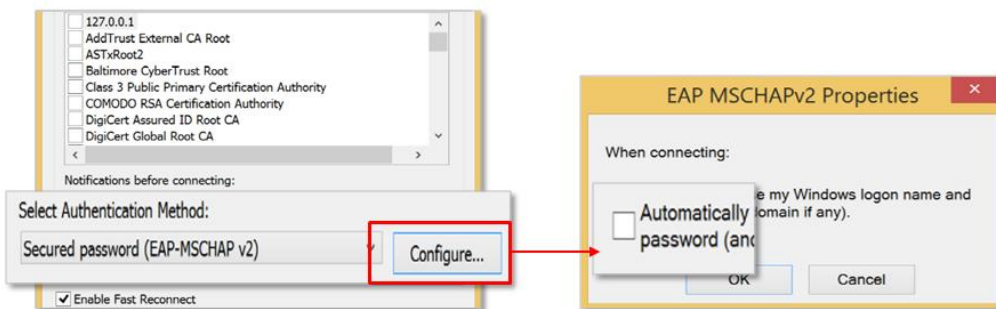
If the selection is different, click and change the setting to given information, and click 'Setting button' next to 'Choose a network authentication method'.



## 07 Wireless network property setting entry.

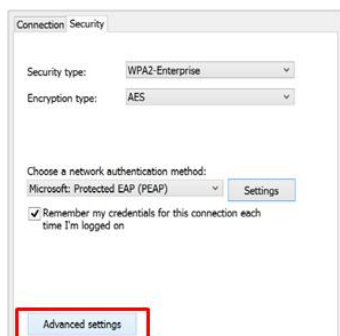
Select "Verify the server's identity by validating the certificate" in the 'settings'.

For 'Select authentication method', 'EAP-MSCHAP v2' must be selected. Click 'Configure' button for next step.



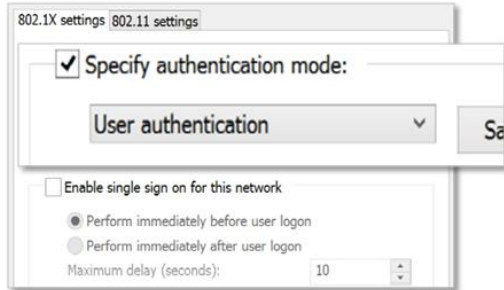
## 08 Executing 'Advanced setting' of wireless network properties.

Click 'Advanced setting' from the screen of wireless network properties.



## 09 Setting 'authentication mode' of advanced setting.

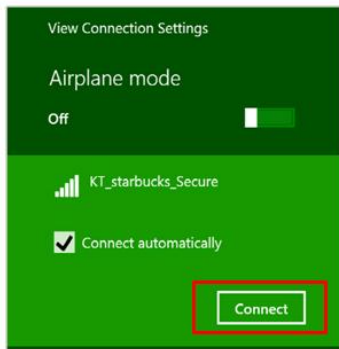
Select "Specify authentication mode" from 'Advanced setting', and click 'Save credentials' to complete the settings.



## Instruction of connecting Starbucks security SSID.

### 01 Security SSID connection

Complete the registration, and connect "KT\_starbucks\_Secure" SSID by clicking the wireless connection icon, type [User's name: starbucks. Password: starbucks] to access the network.



### 02 Connecting webpage authorization.

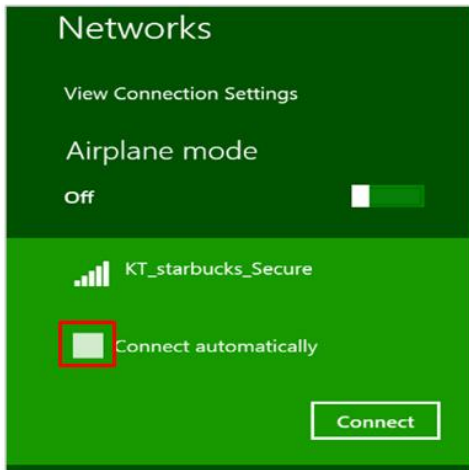
Agree the terms on Starbucks connection webpage by clicking 'Use free internet' button via browser. Internet is successfully connected!





## Starbucks security SSID auto-connecting prevention.

Deselect the automatic connection from connected KT\_starbucks\_Secure SSID screen.



### 04 Caution



Starbucks WiFi network is for public. The network may be vulnerable due to the wireless characteristics. **Please prevent the use of the personal and financial transaction access** while the secured WiFi connected.

The wireless Internet service may cause the insecurity due to the wireless characteristics, and hereby the provider will not receive immunity from responsibility for any loss caused by a provided WiFi service. Be careful of using the WiFi for protecting your personal information.

Part of setting system may differ by the manufacturer and OS version.